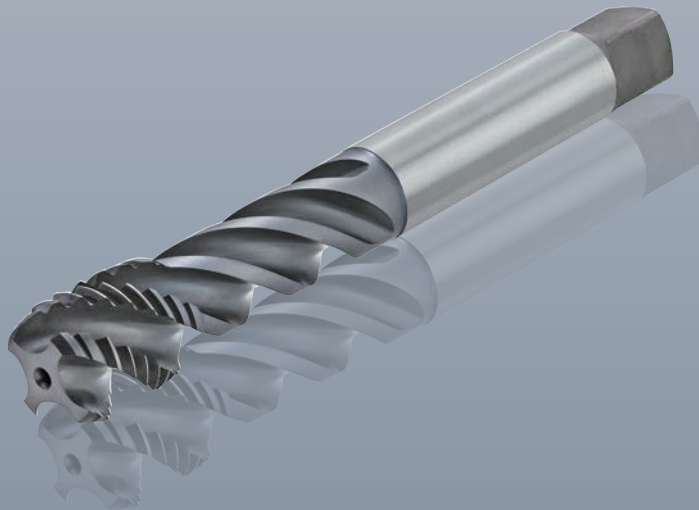


Rasant® Steel
钢加工领域专家
Specialist in steel processing



利美特菲特的新型Rasant® Steel丝锥结合多项创新理念，特别适合钢加工领域要求。

该产品运用专为钢加工应用设计的最新几何槽型和涂层，可显著延长刀具使用寿命。

此外，通过我们最新设计开发技术，您能够可靠地加工生产3倍径深度的盲孔。新型Rasant® Steel，采用最新设计的几何槽型，具备卓越的切屑排出性能。该产品可最大程度避免鸟巢状缠屑缺陷，同时还可提升螺纹表面质量。

Rasant® Steel丝锥创新设计理念：

- 高耐磨多层涂层
- 针对加工工艺优化设计的最新几何槽型
- 耐磨粉末冶金高速钢基底材料

现货库存涵盖所有常规尺寸产品。Rasant® Steel丝锥的主要应用在常规工程加工领域，适用于钢加工应用（P1到P2，1100N/mm²以内）。

Rasant® Steel丝锥产品优势：

- 能够可靠地加工三倍径深度的螺纹
- 非常优良的排屑性能
- 更长的刀具使用寿命

客户利益概览：

- 深度螺纹（3倍径）工艺可靠性
- 降低生产成本
- 安全的排屑性能

几何槽型接受非标定制（特殊的公差、长度、倒角形式等）。

The new Rasant® Steel tap from LMT Fette combines a multitude of innovations that are specially tailored to the requirements in steel processing.

A newly developed geometry and a coating designed for steel processing achieves significantly longer tool life.

Furthermore, with our new development you can produce 3 x D deep blind holes reliably. The new Rasant® Steel is also characterized by a very good chip evacuation, due to the new geometry. Bird's nests are largely avoided. In addition, an improved surface quality in the thread is achieved.

The Rasant® Steel tap offers the following innovations:

- A high wear-resistant multilayer coating
- A cutting edge geometry optimally designed to the process
- The wear-resistant PM substrate

The program is available in all common dimensions from stock. The main applications of the Rasant® Steel tap are in general engineering. The Rasant® Steel tap is designed for steel processing (P1 to P2, up to 1100 N/mm²).

Advantages of the Rasant® Steel tap:

- 3 x D deep threads can be produced reliably
- Very good chip evacuation
- Longer tool life

Customer benefits at a glance:

- Process reliability with deep threads (3 x D)
- Reduced production costs
- Safe chip evacuation

Special tools (additional tolerances, lengths, chamfer forms, etc.) can be produced with this geometry.





目录号 Cat.-No.	6544C	6544C
P1 钢 Steel < 500 N/mm ²	■ v _c = 15–25 m/min	■ v _c = 15–25 m/min
P2 钢 Steel 500–1000 N/mm ²	■ v _c = 15–25 m/min	■ v _c = 15–25 m/min
P3 钢 Steel > 1000 N/mm ²	□ v _c = 10–20 m/min	□ v _c = 10–20 m/min
M1 奥氏体不锈钢 Stainless steel austenitic		
M2 马氏体不锈钢 Stainless steel martensitic		
K1 灰铸铁 Grey cast iron		
K2 球墨铸铁 Nodular cast iron		
N1 铝和铜合金长屑 Alu- & Copper alloys long chipping < 5 % Si		
N2 铝和铜合金长屑 Alu- & Copper alloys long chipping 5–10 % Si		
N3 铝和铜合金短屑 Alu- & Copper alloys short chipping > 10 % Si		
N4 石墨 Graphite		
S1 中等强度钛合金 Titanium alloys medium strength < 900 N/mm ²		
S2 高强度钛合金 Titanium alloys high strength < 1300 N/mm ²		
H1 淬火钢和硬化钢 Chilled steel and Hardened steel 45–55 HRC		

d ₁	P	l ₁	l ₂	l ₃	d ₂	□ h12	z	z	z	z	z	z
----------------	---	----------------	----------------	----------------	----------------	-------	---	---	---	---	---	---

加强型直柄 with reinforced straight shank												
M 2	0,4	45	8	13	2,8	2,1	3	1,6	7295796	TC-CM 2x0,40-6HX-STE45-10-BD	–	–
M 2,5	0,45	50	9	15	2,8	2,1	3	2,05	7295797	TC-CM 2,5x0,45-6HX-STE45-10-BD	–	–
M 3	0,5	56	5	18	3,5	2,7	3	2,5	7295798	TC-CM 3x0,50-6HX-STE45-10-BD	–	–
M 4	0,7	63	6	20	4,5	3,4	3	3,3	7295799	TC-CM 4x0,70-6HX-STE45-10-BD	–	–
M 5	0,8	70	7	25	6	4,9	3	4,2	7295800	TC-CM 5x0,80-6HX-STE45-10-BD	–	–
M 6	1	80	10	30	6	4,9	3	5	7295801	TC-CM 6x1,00-6HX-STE45-10-BD	–	–
M 8	1,25	90	13	35	8	6,2	3	6,8	7295802	TC-CM 8x1,25-6HX-STE45-10-BD	–	–
M 10	1,5	100	15	42	10	8	3	8,5	7295803	TC-CM 10x1,50-6HX-STE45-10-BD	–	–

标准直柄 with standard straight shank												
M 6	1	80	10	–	4,5	3,4	3	5	–	–	7295804	TC-CM 6x1,00-6HX-STE45-10-CD
M 8	1,25	90	13	–	6	4,9	3	6,8	–	–	7295805	TC-CM 8x1,25-6HX-STE45-10-CD
M 10	1,5	100	12	–	7	5,5	3	8,5	–	–	7295806	TC-CM 10x1,50-6HX-STE45-10-CD
M 12	1,75	110	18	–	9	7	4	10,2	–	–	7295807	TC-CM 12x1,75-6HX-STE45-10-CD
M 14	2	110	20	–	11	9	4	12	–	–	7295808	TC-CM 14x2,00-6HX-STE45-10-CD
M 16	2	110	20	–	12	9	4	14	–	–	7295809	TC-CM 16x2,00-6HX-STE45-10-CD
M 18	2,5	125	25	–	14	11	4	15,5	–	–	7295810	TC-CM 18x2,50-6HX-STE45-10-CD
M 20	2,5	140	25	–	16	12	4	17,5	–	–	7295811	TC-CM 20x2,50-6HX-STE45-10-CD
M 22	2,5	140	25	–	18	14,5	4	19,5	–	–	7295812	TC-CM 22x2,50-6HX-STE45-10-CD
M 24	3	160	30	–	18	14,5	4	21	–	–	7295813	TC-CM 24x3,00-6HX-STE45-10-CD
M 27	3	160	30	–	20	16	4	24	–	–	7295814	TC-CM 27x3,00-6HX-STE45-10-CD
M 30	3,5	180	35	–	22	18	4	26,5	–	–	7295815	TC-CM 30x3,50-6HX-STE45-10-CD
M 36	4	200	40	–	28	22	5	32	–	–	7295816	TC-CM 36x4,00-6HX-STE45-10-CD
M 42	4,5	200	45	–	32	24	5	37,5	–	–	7295817	TC-CM 42x4,50-6HX-STE45-10-CD
M 45 ¹⁾	4,5	220	45	–	36	29	5	40,5	–	–	7295818	TC-CM 45x4,50-6HX-STE45-10-CD
M 48 ¹⁾	5	250	50	–	36	29	5	43	–	–	7295819	TC-CM 48x5,00-6HX-STE45-10-CD
M 52 ¹⁾	5	250	50	–	40	32	5	47	–	–	7295820	TC-CM 52x5,00-6HX-STE45-10-CD

¹⁾ 可根据要求定制。
Available on request

■ = 第一选择 First choice
□ = 第二选择 Second choice



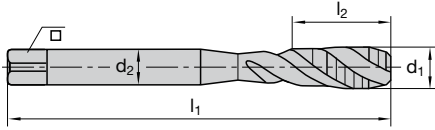
目录号 Cat.-No.					6544C				6544C			
P1	钢 Steel < 500 N/mm ²				■ v _c = 15–25 m/min				■ v _c = 15–25 m/min			
P2	钢 Steel 500–1000 N/mm ²				■ v _c = 15–25 m/min				■ v _c = 15–25 m/min			
P3	钢 Steel > 1000 N/mm ²				□ v _c = 10–20 m/min				□ v _c = 10–20 m/min			
M1	奥氏体不锈钢 Stainless steel austenitic											
M2	马氏体不锈钢 Stainless steel martensitic											
K1	灰铸铁 Grey cast iron											
K2	球墨铸铁 Nodular cast iron											
N1	铝和铜合金长屑 Alu- & Copper alloys long chipping < 5 % Si											
N2	铝和铜合金长屑 Alu- & Copper alloys long chipping 5–10 % Si											
N3	铝和铜合金短屑 Alu- & Copper alloys short chipping > 10 % Si											
N4	石墨 Graphite											
S1	中等强度钛合金 Titanium alloys medium strength < 900 N/mm ²											
S2	高强度钛合金 Titanium alloys high strength < 1300 N/mm ²											
H1	淬火钢和硬化钢 Chilled steel and Hardened steel 45–55 HRC											
d ₁	P	l ₁	l ₂	l ₃	d ₂	□ h12	z		物料号	LMT-编号	物料号	LMT-编号
加强型直柄 with reinforced straight shank												
M 4	0,7	63	6	21	4,5	3,4	3	3,3	7295821	TC-CM 4x0,70-6GX-STE45-10-BD	-	-
M 5	0,8	70	7	25	6	4,9	3	4,2	7295822	TC-CM 5x0,80-6GX-STE45-10-BD	-	-
M 6	1	80	10	30	6	4,9	3	5	7295823	TC-CM 6x1,00-6GX-STE45-10-BD	-	-
M 8	1,25	90	13	35	8	6,2	3	6,8	7295824	TC-CM 8x1,25-6GX-STE45-10-BD	-	-
M 10	1,5	100	15	42	10	8	3	8,5	7295825	TC-CM 10x1,50-6GX-STE45-10-BD	-	-
标准直柄 with standard straight shank												
M 12	1,75	110	18	-	9	7	4	10,2	-	-	7295826	TC-CM 12x1,75-6GX-STE45-10-CD
M 16	2	110	20	-	12	9	4	14	-	-	7295827	TC-CM 16x2,00-6GX-STE45-10-CD

■ = 第一选择 First choice
□ = 第二选择 Second choice



目录号 Cat.-No.		6544C				6544C						
P1	钢 Steel < 500 N/mm ²	■	v _c = 15–25 m/min			■	v _c = 15–25 m/min					
P2	钢 Steel 500–1000 N/mm ²	■	v _c = 15–25 m/min			■	v _c = 15–25 m/min					
P3	钢 Steel > 1000 N/mm ²	□	v _c = 10–20 m/min			□	v _c = 10–20 m/min					
M1	奥氏体不锈钢 Stainless steel austenitic											
M2	马氏体不锈钢 Stainless steel martensitic											
K1	灰铸铁 Grey cast iron											
K2	球墨铸铁 Nodular cast iron											
N1	铝和铜合金长屑 Alu- & Copper alloys long chipping < 5 % Si											
N2	铝和铜合金长屑 Alu- & Copper alloys long chipping 5–10 % Si											
N3	铝和铜合金短屑 Alu- & Copper alloys short chipping > 10 % Si											
N4	石墨 Graphite											
S1	中等强度钛合金 Titanium alloys medium strength < 900 N/mm ²											
S2	高强度钛合金 Titanium alloys high strength < 1300 N/mm ²											
H1	淬火钢和硬化钢 Chilled steel and Hardened steel 45–55 HRC											
d ₁	P	l ₁	l ₂	l ₃	d ₂	□ h12	z		物料号	LMT-编号	物料号	LMT-编号
加强型直柄 with reinforced straight shank												
M 4	0,7	63	6	21	4,5	3,4	3	3,3	7295828	TC-EM 4x0,70-6HX-STE45-10-BD	–	–
M 5	0,8	70	7	25	6	4,9	3	4,2	7295829	TC-EM 5x0,80-6HX-STE45-10-BD	–	–
M 6	1	80	10	30	6	4,9	3	5	7295830	TC-EM 6x1,00-6HX-STE45-10-BD	–	–
M 8	1,25	90	13	35	8	6,2	3	6,8	7295831	TC-EM 8x1,25-6HX-STE45-10-BD	–	–
M 10	1,5	100	15	42	10	8	3	8,5	7295832	TC-EM 10x1,50-6HX-STE45-10-BD	–	–
标准直柄 with standard straight shank												
M 12	1,75	110	18	–	9	7	4	10,2	–	–	7295833	TC-EM 12x1,75-6HX-STE45-10-CD
M 14	2	110	20	–	11	9	4	12	–	–	7295834	TC-EM 14x2,00-6HX-STE45-10-CD
M 16	2	110	20	–	12	9	4	14	–	–	7295835	TC-EM 16x2,00-6HX-STE45-10-CD
M 18	2,5	125	25	–	14	11	4	15,5	–	–	7295836	TC-EM 18x2,50-6HX-STE45-10-CD
M 20	2,5	140	25	–	16	12	4	17,5	–	–	7295837	TC-EM 20x2,50-6HX-STE45-10-CD

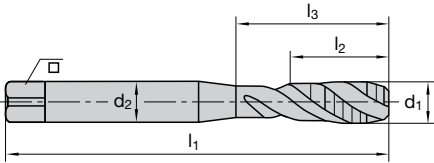
■ = 第一选择 First choice
□ = 第二选择 Second choice



目录号 Cat.-No.									6545C
P1	钢 Steel < 500 N/mm ²								■ v _c = 15–25 m/min
P2	钢 Steel 500–1000 N/mm ²								■ v _c = 15–25 m/min
P3	钢 Steel > 1000 N/mm ²								□ v _c = 10–20 m/min
M1	奥氏体不锈钢 Stainless steel austenitic								
M2	马氏体不锈钢 Stainless steel martensitic								
K1	灰铸铁 Grey cast iron								
K2	球墨铸铁 Nodular cast iron								
N1	铝和铜合金长屑 Alu- & Copper alloys long chipping < 5 % Si								
N2	铝和铜合金长屑 Alu- & Copper alloys long chipping 5–10 % Si								
N3	铝和铜合金短屑 Alu- & Copper alloys short chipping > 10 % Si								
N4	石墨 Graphite								
S1	中等强度钛合金 Titanium alloys medium strength < 900 N/mm ²								
S2	高强度钛合金 Titanium alloys high strength < 1300 N/mm ²								
H1	淬火钢和硬化钢 Chilled steel and Hardened steel 45–55 HRC								
d ₁	P	l ₁	l ₂	d ₂	□ h12	z			
加强型直柄 with reinforced straight shank									
MF 8	1	90	10	6	4,9	3	7	7295838	TC-EMF 8x1,00-6HX-STE45-10-CD
MF 9	1	90	10	7	5,5	3	8	7295839	TC-EMF 9x1,00-6HX-STE45-10-CD
MF 10	1	90	10	7	5,5	3	9	7295840	TC-EMF 10x1,00-6HX-STE45-10-CD
MF 10	1,25	100	13	7	5,5	3	8,8	7295841	TC-EMF 10x1,25-6HX-STE45-10-CD
MF 11	1	90	11	8	6,2	3	10	7295842	TC-EMF 11x1,00-6HX-STE45-10-CD
MF 12	1	100	11	9	7	4	11	7295843	TC-EMF 12x1,00-6HX-STE45-10-CD
MF 12	1,25	100	13	9	7	4	10,8	7295844	TC-EMF 12x1,25-6HX-STE45-10-CD
MF 12	1,5	100	15	9	7	4	10,5	7295845	TC-EMF 12x1,50-6HX-STE45-10-CD
MF 14	1,5	100	15	11	9	4	12,5	7295846	TC-EMF 14x1,50-6HX-STE45-10-CD
MF 16	1,5	100	15	12	9	4	14,5	7295847	TC-EMF 16x1,50-6HX-STE45-10-CD
MF 18	1,5	110	16	14	11	4	16,5	7295848	TC-EMF 18x1,50-6HX-STE45-10-CD
MF 20	1,5	125	16	16	12	4	18,5	7295849	TC-EMF 20x1,50-6HX-STE45-10-CD
MF 22 ¹⁾	1,5	125	16	18	14,5	5	20,5	7295850	TC-EMF 22x1,50-6HX-STE45-10-CD
MF 24 ¹⁾	1,5	140	16	18	14,5	5	22,5	7295851	TC-EMF 24x1,50-6HX-STE45-10-CD
MF 24 ¹⁾	2	140	20	18	14,5	5	22	7295852	TC-EMF 24x2,00-6HX-STE45-10-CD
MF 26 ¹⁾	1,5	140	16	18	14,5	5	24,5	7295853	TC-EMF 26x1,50-6HX-STE45-10-CD
MF 27 ¹⁾	2	140	20	20	16	5	25	7295854	TC-EMF 27x2,00-6HX-STE45-10-CD
MF 30 ¹⁾	2	150	20	22	18	5	28	7295855	TC-EMF 30x2,00-6HX-STE45-10-CD

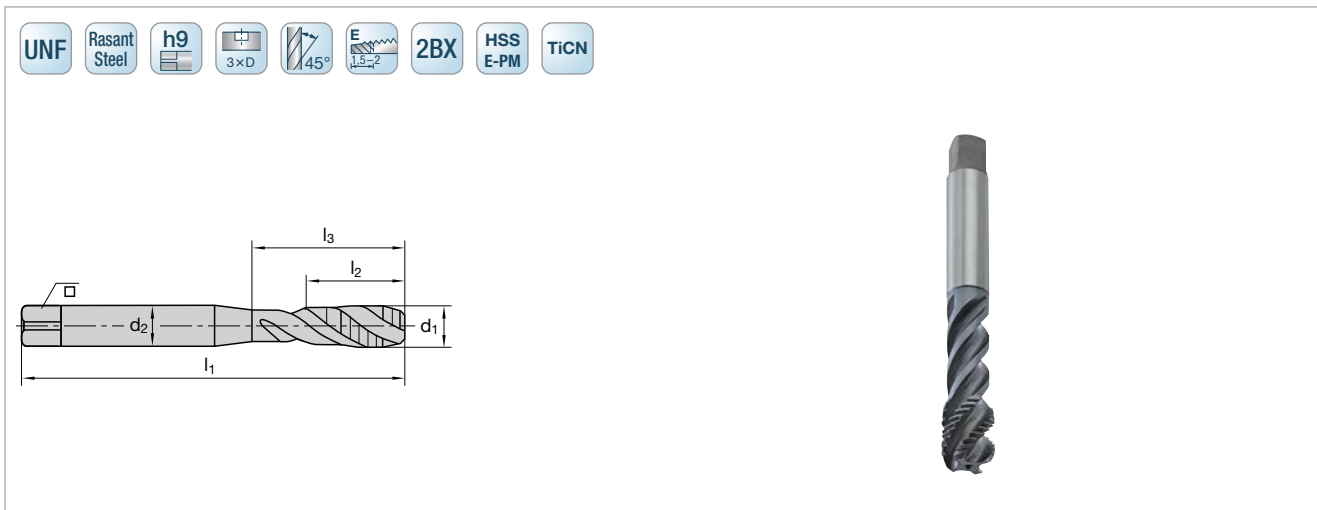
¹⁾ MF 22 – MF 30 – 螺纹深度最大2.5倍径
MF 22–MF 30 – Thread depth max. 2.5 x D

■ = 第一选择 First choice
□ = 第二选择 Second choice



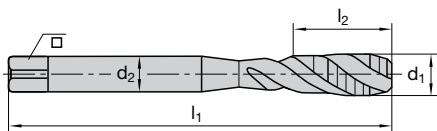
目录号 Cat.-No.		6546C									
P1	钢 Steel < 500 N/mm ²	■ v _c = 15–25 m/min									
P2	钢 Steel 500–1000 N/mm ²	■ v _c = 15–25 m/min									
P3	钢 Steel > 1000 N/mm ²	□ v _c = 10–20 m/min									
M1	奥氏体不锈钢 Stainless steel austenitic										
M2	马氏体不锈钢 Stainless steel martensitic										
K1	灰铸铁 Grey cast iron										
K2	球墨铸铁 Nodular cast iron										
N1	铝和铜合金长屑 Alu- & Copper alloys long chipping < 5 % Si										
N2	铝和铜合金长屑 Alu- & Copper alloys long chipping 5–10 % Si										
N3	铝和铜合金短屑 Alu- & Copper alloys short chipping > 10 % Si										
N4	石墨 Graphite										
S1	中等强度钛合金 Titanium alloys medium strength < 900 N/mm ²										
S2	高强度钛合金 Titanium alloys high strength < 1300 N/mm ²										
H1	淬火钢和硬化钢 Chilled steel and Hardened steel 45–55 HRC										
d ₁	P	l ₁	l ₂	l ₃	d ₂	□ h12	z				
加强型直柄 with reinforced straight shank											
UNC 1/4	20	80	13	31	7	5,5	3	5,1	7295856	TC-CUNC 1/4x20-2BX-STE45-10-BD	
UNC 5/16	18	90	14	35	8	6,2	3	6,6	7295857	TC-CUNC 5/16x18-2BX-STE45-10-BD	
UNC 3/8	16	100	16	40	9	7	3	8	7295858	TC-CUNC 3/8x16-2BX-STE45-10-BD	
标准直柄 with standard straight shank											
UNC 1/2	13	110	20	–	9	7	4	10,8	7295859	TC-CUNC 1/2x13-2BX-STE45-10-CD	
UNC 5/8	11	110	22	–	12	9	4	13,5	7295860	TC-CUNC 5/8x11-2BX-STE45-10-CD	
UNC 3/4	10	125	25	–	14	11	4	16,5	7295861	TC-CUNC 3/4x10-2BX-STE45-10-CD	

■ = 第一选择 First choice
□ = 第二选择 Second choice



目录号 Cat.-No.		6546C									
P1	钢 Steel < 500 N/mm ²	■ v _c = 15–25 m/min									
P2	钢 Steel 500–1000 N/mm ²	■ v _c = 15–25 m/min									
P3	钢 Steel > 1000 N/mm ²	□ v _c = 10–20 m/min									
M1	奥氏体不锈钢 Stainless steel austenitic										
M2	马氏体不锈钢 Stainless steel martensitic										
K1	灰铸铁 Grey cast iron										
K2	球墨铸铁 Nodular cast iron										
N1	铝和铜合金长屑 Alu- & Copper alloys long chipping < 5 % Si										
N2	铝和铜合金长屑 Alu- & Copper alloys long chipping 5–10 % Si										
N3	铝和铜合金短屑 Alu- & Copper alloys short chipping > 10 % Si										
N4	石墨 Graphite										
S1	中等强度钛合金 Titanium alloys medium strength < 900 N/mm ²										
S2	高强度钛合金 Titanium alloys high strength < 1300 N/mm ²										
H1	淬火钢和硬化钢 Chilled steel and Hardened steel 45–55 HRC										
d ₁	P	l ₁	l ₂	l ₃	d ₂	□ h12	z		物料号	LMT-编号	
加强型直柄 with reinforced straight shank											
UNF 1/4	28	80	10	31	7	5,5	3	5,5	7295862	TC-EUNF 1/4x28-2BX-STE45-10-BD	
UNF 5/16	24	90	10	35	8	6,2	3	6,9	7295863	TC-EUNF 5/16x24-2BX-STE45-10-BD	
UNF 3/8	24	100	10	40	9	7	3	8,5	7295864	TC-EUNF 3/8x24-2BX-STE45-10-BD	
标准直柄 with standard straight shank											
UNF 1/2	20	100	13	–	9	7	4	11,5	7295865	TC-EUNF 1/2x20-2BX-STE45-10-CD	
UNF 5/8	18	100	15	–	12	9	4	14,5	7295866	TC-EUNF 5/8x18-2BX-STE45-10-CD	
UNF 3/4	16	110	17	–	14	11	4	17,5	7295867	TC-EUNF 3/4x16-2BX-STE45-10-CD	

■ = 第一选择 First choice
□ = 第二选择 Second choice



目录号 Cat.-No.		6547C							
P1	钢 Steel < 500 N/mm ²	■	v _c = 15–25 m/min						
P2	钢 Steel 500–1000 N/mm ²	■	v _c = 15–25 m/min						
P3	钢 Steel > 1000 N/mm ²	□	v _c = 10–20 m/min						
M1	奥氏体不锈钢 Stainless steel austenitic								
M2	马氏体不锈钢 Stainless steel martensitic								
K1	灰铸铁 Grey cast iron								
K2	球墨铸铁 Nodular cast iron								
N1	铝和铜合金长屑 Alu- & Copper alloys long chipping < 5 % Si								
N2	铝和铜合金长屑 Alu- & Copper alloys long chipping 5–10 % Si								
N3	铝和铜合金短屑 Alu- & Copper alloys short chipping > 10 % Si								
N4	石墨 Graphite								
S1	中等强度钛合金 Titanium alloys medium strength < 900 N/mm ²								
S2	高强度钛合金 Titanium alloys high strength < 1300 N/mm ²								
H1	淬火钢和硬化钢 Chilled steel and Hardened steel 45–55 HRC								
d ₁	P	l ₁	l ₂	d ₂	□ h12	z		物料号	LMT-编号
标准直柄 with standard straight shank									
G 1/8	28	90	9	7	5,5	3	8,8	7295868	TC-CG 1/8x28-STE45-10-CD
G 1/4	19	100	14	11	9	4	11,8	7295869	TC-CG 1/4x19-STE45-10-CD
G 3/8	19	100	14	12	9	4	15,3	7295870	TC-CG 3/8x19-STE45-10-CD
G 1/2	14	125	18	16	12	4	19	7295871	TC-CG 1/2x14-STE45-10-CD
G 3/4	14	140	18	20	16	4	24,5	7295872	TC-CG 3/4x14-STE45-10-CD
G 1	11	160	23	25	20	5	30,75	7295873	TC-CG 1x11-STE45-10-CD

■ = 第一选择 First choice
□ = 第二选择 Second choice

常规机械加工, 安装板
General machining, Clamping plate

机床 Machine:
Haas VM3 CNC, BT40

丝锥装夹 Clamping tap:
弹簧筒夹 (刚性)
Collet (rigid)

材料 Material:
Toolox 33 (35 HRC)

螺纹 Thread:
M12

螺纹深度 Thread depth:
22 mm (约2倍径)
22 mm (ca. 2 x D)

切削速度 Cutting speed:
 $v_c = 6 \text{ m/min}$

冷却液 Coolant:
乳化液 10–12 %
Emulsion 8–10 %

结果 Result:
结合丝锥卓越的切屑排出性能, 可实现高度可靠的螺纹加工制造。加工制造的螺纹外观精美, Toolox加工难度较高。
Threads could be produced here reliably with very good chip evacuation. The generated thread looked very good visually. Toolox is very difficult to machine.

常规机械加工, 配重块
General machining, Weight

机床 Machine:
BAZ

丝锥装夹 Clamping tap:
带有长度补偿功能的刀架
Toolholder with length compensation

材料 Material:
St-52

螺纹 Thread:
M20

螺纹深度 Thread depth:
55 mm (2.8倍径)
55 mm (ca. 2.8 x D)

切削速度 Cutting speed:
 $v_c = 12 \text{ m/min}$

冷却液 Coolant:
乳化液 10–12 %
Emulsion 8–10 %

结果 Result:
即使对于3倍径深度螺纹, 该产品也能够高度可靠地完成数百次螺纹加工制造。同样, 本产品也具有卓越的切屑排出性能。
Even with the almost 3 x D deep threads, several hundred threads could be manufactured reliably. Here, too, the chip evacuation was very good.

我们致力于为您提供全球化服务!

登陆网站获得来自利美特专家的服务与支持: www.lmt-tools.com.cn

未经我方明确许可,不得重印本出版物的全部或部分內容。我方保留所有权利。內容中的任何错误或印刷与排版错误均无任何权利。图表、特性和尺寸代表本手册发布之日的当时状态。我方保留进行技术更改的权利。在任何情况下,产品视觉外观的任何细节可能与实际外观不一致。

资料来源: Studio Thomas Schmitz, Hamburg

We are committed to you worldwide!

Contact us and our experts: www.lmt-tools.com

This publication may not be reprinted in whole or part without our express permission. All right reserved. No rights may be derived from any errors in content or from typographical or typesetting errors. Diagrams, features and dimensions represent the current status on the date of issue of this catalog. We reserve the right to make technical changes. The visual appearance of the products may not necessarily correspond to the actual appearance in all cases or in every detail.

Sources: Studio Thomas Schmitz, Hamburg





利美特金属加工技术（中国）有限公司
LMT China Co., Ltd.

南京市江宁区秣陵街道盛通路9号(邮编: 211111)
9 Shengtong Road, Moling Sub-District,
Jiangning Development Zone, Nanjing, 211111, PRC
电话:025-52128866
传真:025-52106376
Email:info.cn@lmt-tools.com
www.lmt-tools.com.cn



公司网站



微信公众平台